



**CIHM
Microfiche
Series
(Monographs)**

**ICMH
Collection de
microfiches
(monographies)**



Canadian Institute for Historical Microreproductions / Institut canadien de microreproductions historiques

© 1994

Technical and Bibliographic Notes / Notes techniques et bibliographiques

The Institute has attempted to obtain the best original copy available for filming. Features of this copy which may be bibliographically unique, which may alter any of the images in the reproduction, or which may significantly change the usual method of filming, are checked below.

L'Institut a microfilmé le meilleur exemplaire qu'il lui a été possible de se procurer. Les détails de cet exemplaire qui sont peut-être uniques du point de vue bibliographique, qui peuvent modifier une image reproduite, ou qui peuvent exiger une modification dans la méthode normale de filmage sont indiqués ci-dessous.

- Coloured covers/
Couverture de couleur
- Covers damaged/
Couverture endommagée
- Covers restored and/or laminated/
Couverture restaurée et/ou pelliculée
- Cover title missing/
Le titre de couverture manque
- Coloured maps/
Cartes géographiques en couleur
- Coloured ink (i.e. other than blue or black)/
Encre de couleur (i.e. autre que bleue ou noire)
- Coloured plates and/or illustrations/
Planches et/ou illustrations en couleur
- Bound with other material/
Relié avec d'autres documents
- Tight binding may cause shadows or distortion
along interior margin/
La reliure serrée peut causer de l'ombre ou de la
distorsion le long de la marge intérieure
- Blank leaves added during restoration may appear
within the text. Whenever possible, these have
been omitted from filming/
Il se peut que certaines pages blanches ajoutées
lors d'une restauration apparaissent dans le texte,
mais, lorsque cela était possible, ces pages n'ont
pas été filmées.

- Coloured pages/
Pages de couleur
- Pages damaged/
Pages endommagées
- Pages restored and/or laminated/
Pages restaurées et/ou pelliculées
- Pages discoloured, stained or foxed/
Pages décolorées, tachetées ou piquées
- Pages detached/
Pages détachées
- Showthrough/
Transparence
- Quality of print varies/
Qualité inégale de l'impression
- Continuous pagination/
Pagination continue
- Includes index(es)/
Comprend un (des) index
- Title on header taken from:/
Le titre de l'en-tête provient:
- Title page of issue/
Page de titre de la livraison.
- Caption of issue/
Titre de départ de la livraison
- Masthead/
Générique (périodiques) de la livraison

- Additional comments:/
Commentaires supplémentaires:

This item is filmed at the reduction ratio checked below/
Ce document est filmé au taux de réduction indiqué ci-dessous.

10X	14X	18X	22X	26X	30X
<input type="checkbox"/>	<input type="checkbox"/>	<input type="checkbox"/>	<input checked="" type="checkbox"/>	<input type="checkbox"/>	<input type="checkbox"/>
12X	16X	20X	24X	28X	32X

The copy filmed here has been reproduced thanks to the generosity of:

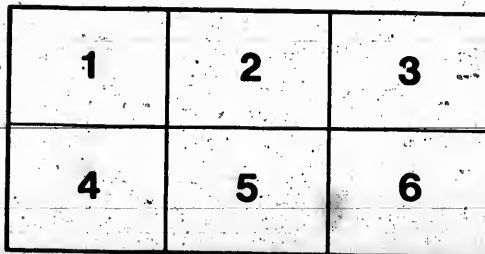
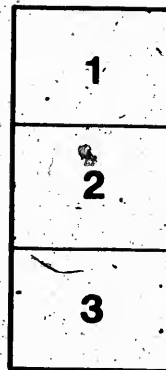
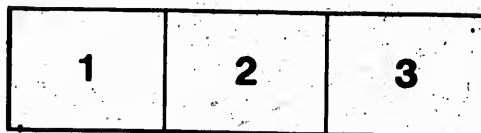
Thomas Fisher Rare Book Library,
University of Toronto Library

The images appearing here are the best quality possible considering the condition and legibility of the original copy and in keeping with the filming contract specifications.

Original copies in printed paper covers are filmed beginning with the front cover and ending on the last page with a printed or illustrated impression, or the back cover when appropriate. All other original copies are filmed beginning on the first page with a printed or illustrated impression, and ending on the last page with a printed or illustrated impression.

The last recorded frame on each microfiche shall contain the symbol \rightarrow (meaning "CONTINUED"), or the symbol ∇ (meaning "END"), whichever applies.

Maps, plates, charts, etc., may be filmed at different reduction ratios. Those too large to be entirely included in one exposure are filmed beginning in the upper left hand corner, left to right and top to bottom, as many frames as required. The following diagrams illustrate the method:



L'exemplaire filmé fut reproduit grâce à la générosité de:

Thomas Fisher Rare Book Library,
University of Toronto Library

Les images suivantes ont été reproduites avec le plus grand soin, compte tenu de la condition et de la netteté de l'exemplaire filmé, et en conformité avec les conditions du contrat de filmage.

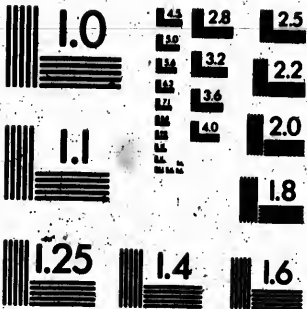
Les exemplaires originaux dont la couverture en papier est imprimée sont filmés en commençant par le premier plat et en terminant soit par la dernière page qui comporte une empreinte d'impression ou d'illustration, soit par le second plat, selon le cas. Tous les autres exemplaires originaux sont filmés en commençant par la première page qui comporte une empreinte d'impression ou d'illustration et en terminant par la dernière page qui comporte une telle empreinte.

Un des symboles suivants apparaîtra sur la dernière image de chaque microfiche, selon le cas: le symbole \rightarrow signifie "A SUIVRE", le symbole ∇ signifie "FIN".

Les cartes, planches, tableaux, etc., peuvent être filmés à des taux de réduction différents. Lorsque le document est trop grand pour être reproduit en un seul cliché, il est filmé à partir de l'angle supérieur gauche, de gauche à droite, et de haut en bas, en prenant le nombre d'images nécessaire. Les diagrammes suivants illustrent la méthode.

MICROCOPY RESOLUTION TEST CHART

(ANSI and ISO TEST CHART No. 2)



APPLIED IMAGE Inc

1853 East Main Street
Rochester, New York 14609 USA
(716) 482 - 0300 - Phone
(716) 288 - 5999 - Fax

Magna cum Periculo Custoditur, quod Multis Placeat.

Collectio Sculptarum

INTERMEDIATE CATALOGUE

CONSISTING OF

A fine COLLECTION of ENGRAVINGS, in FANCY, CLASSICAL and HISTORICAL SUBJECTS, comprising MANY HUNDRED ENGRAVED PORTRAITS, FRENCH and ENGLISH, including a scarce collection of FRANKLIN PORTRAITS, early CANADIAN and AMERICAN VIEWS. Fine old Bible Illustrations, etc., etc.

On Sale for Cash, which does not include Postage or Express Charges, by

JOHN BRITNELL,

298 YONGE STREET, - TORONTO, CANADA.

L. B.'s Political Sketches. Nos. 1 to 510 of these celebrated humorous and satirical sketches, introducing portraits of all the great political characters of the time, (3 missing). 9 vols, oblong folio, half morocco, gilt edges; ALSO THE KEY TO THE CHARACTERS, 8vo, cloth, gilt edges, 25.50. T. McLean, 1829-37. 1

It was the famous JOHN DOYLE who produced this CELEBRATED SERIES OF CARICATURES, which contains the most comprehensive and striking history of those eventful years. Hundreds of well known characters from the IRON DUKE on the one side, to the great DANIEL O'CONNELL on the other, may be recognized without even the aid of the key. Hundreds of groups are here brought together, and the scenes are continually on the change, from WINDSOR to WESTMINSTER and from the HORSE GUARDS TO CONSTITUTION HILL and thence to BUCKINGHAM PALACE, CLUBLAND and the HOUSE OF COMMONS is but one step. Here may be seen the history of the great and sweeping REFORM BILL of 1832, which was to have destroyed Britain and the constitution at once and forever, but has since proved to be the lever to trade, wealth and happiness a hundredfold, and thus proving to the world that the strength of a nation does not consist of armed men and irresponsible princes, but in a responsible and well-trained people. As we turn over these speaking memorandums of the DUKE OF WELLINGTON and SIR ROBERT PEEL, of LORD BROUGHAM and LORD LYNDBURST, of ABERDEEN and ELDON, LORD JOHN RUSSELL and LORD ALTHORP, RIPON and RICHMOND, GREY and MELBOURNE, O'CONNELL on his MEMORABLE TOUR, the HOUNDS on a WRONG SCENT, and the MURDER OF THE INNOCENTS, we make our comparisons and draw our conclusions and regret being obliged to part with such company.

ETCHINGS.

Etchings. A collection of 59, *very fine, after Colman, Bertheault and others.* Folio, 4to, 8vo and 12mo, mostly proofs before letters and on china or Indian paper, in fine state, 4.50 the lot. 2

— ON THE DORT, by S. HAYDN, *artist's proof on India paper*, folio, very fine. Another, CATTLE, TREES and WATER, *proof before letters*, both large folio, full margins, 2.00. 3

— THE LEGEND. *Tinted, large and fine*, by CHALMERS. WOODLANDS, *proof before letters, on china paper, both large folio, full margins*, 1.50. 4

— MAGUERITE, after TIBBOT, 4to, *a corner only attached to large and thick mounting card.* LA CASCADE, small 4to, *with large card.* Also large folio view near Constantinople, 1.25. Early part of the century. 5

2 ETCHINGS.—PORTRAITS—HISTORICAL AND MISCELLANEOUS.

- Etchings.** MORRO CASTLE, by NUNEHAM, folio; 1764. Presentation au Temple. Folio, old, and five others, COW DRINKING, etc., all old. 1.25 6
 ——— WELSH POOL, from Bevis Castle, 1810. THE CARD PLAYERS, and three others. Folio and 4to, all old, 1.25. 7
 ——— LANDSCAPES, PRIVATE PLATES, etc., some proofs. 12mo, 8vo and 4to, 2.00. 8
 ——— A similar lot, 50, but not duplicates, 2.00. 9
 ——— OF HEADS, etc., mostly 4to, upwards of 30, 4-50. 10
 In this lot will be found four plates with the autograph in pencil or ink of SIR GEORGE HAYTER, the well-known PORTRAIT and MINIATURE PAINTER.
 ——— MODERN FRENCH, 16 of Coast, Shipping, (including one of GREENWICH) River and City Scenery, and Portraits. Folio, full margins, a very nice and uniform lot, 1.50. 11
 ——— MODERN FRENCH, Lyon et ses Environs, set of 12 on china paper 4to, full margins. ORPHEUS and EURYDICE, and 20 others, folio and royal 8vo, 1.50. 12

PORTRAITS—HISTORICAL AND MISCELLANEOUS.

- Historical French Portraits.** 80, mostly steel, royal 8vo, large margins, of KINGS, DUKES, GENERALS and MARQUISSES. The tail corners of 28 of this lot are water-stained, otherwise in fine condition; SOME PROOFS BEFORE LETTERS; 2.50. Paris, about 1840. 13
French Portraits. A fine and uniform series of 56 FINE PORTRAITS OF EMINENT FRENCHMEN of the XIXth century (mostly contemporary), of all professions, IN FINE CONDITION; royal 4to; many on china or India paper; 4.50. Paris, 1865, etc. 14
 ——— (Military) of NAPOLEON and GENERALS of the period (24). Royal 8vo, 1.00. 15
 ——— Another lot (duplicate of the last), but only 15 in number, 50c. 16
Plutarque. Vies des HOMMES ILLUSTRES. A fine series of 40 PORTRAITS, complete in 9 divisions, royal 8vo, in fine condition, 1.75. Paris, 1827. 17
Album du Rappell. A uniform series of 21 large and fine FOLIO PORTRAITS OF EMINENT FRENCHMEN, of the Rappell School, on stone; with letterpress attached. 2.00. 18
 Includes LOUIS BLANC, HENRI ROCHFORT, FELIX PYAT, EDGAR QUINET, ROBERT HYENNE, LOCKROY, FRANCOIS, CHAS. HUGO, VICTOR HUGO, and other eminent men.
Portraits of CELEBRATED FRENCH PAINTERS (53) ANCIENT and MODERN. 8vo, 4to, and folio; many dated previous to the present century, and some very much older —AN INTERESTING and VALUABLE LOT, 4.00. 19
Portraits (Old) of EMINENT FRENCH PHYSICIANS and DOCTORS (45), mostly of the 17th and 18th centuries, including CUVIER and LAVATER. 8vo, royal 8vo and 4to, 3-50. 20
Des-Herbliers (Henri-Francois), Chevalier Marquis, Commandeur Militaire et Navales, Ne'en 1682. Mort 1750. 21
Scott, (Sir W.) Fine 8vo portrait on steel, engraved by Finden, 20c. 1837. 22
 ——— Another portrait of SCOTT, 8vo, on steel, by Hopwood, 20c. 23
 ——— Another very nice 8vo, on stone, 20c. Paris. 24
Todd, (Robert Bentley), physician and man of science. One of the finest engraved portraits we have ever seen. Royal, 4to, on India Paper, full margins, 17 x 22, 1.00. Colnaghi, 1860. 25
Cook, (Le Cap.) 8vo, port., oval in square, about 1790. SALOMO GLASS, celebrated German divine, fine old port., 4to, 1656. LORD BYRON, proof, facsimile autograph letter beneath, royal 4to, 75c. the three. 27
Ally Hyder, Commandant-et-chef des Mahrattes. Fine old French portrait, small 4to, 40c. This man and his son, Tippoo Sahib, are well known in Indian History. 28

Hiett, (G scene ben
 A
Cadell, 1
 He succes
 of France an
 and died in
Manners
 REYNOL
 Command
Portrait
 1502; L
 4 large f
 Four well
 Orleans and
 opponent of
 condition, b
Portrait
 Philosop
 Mostly
Portrait
 Alciat, 4
 1.75-
Historic
 (45.) 4to
 ANTOINE
Portrait
 19th cen
 M. D.,
 3-50.
Portrait
 cluding
 SIR HU
 Paris, a
French
 mostly i
 in Lon
 of the p
 views o
 etc., et
Castle
 PERSON
 (or Jan
 chalk c
 of the
 publish
 the ab
 This
 Coact, h
 ersons re
Costan
 His M
 Lord
 Beaut
 by Sir

on au Temple. 6

and three others. 7

and 4to, 2.00. 8

9

10

GEORGE HAYTER,

of GREENWICH)

ice and uniform 11

paper 4to, full 12

0, 1.50.

US.

argins, of KINGS,

his lot are water-

8; 2.50. Paris, 13

raits of EMINENT

professions, IN

Paris, 1865, etc. 14

Royal 8vo, 1.00. 15

16

PORTRAITS, com-

17

10 PORTRAITS of

sterpress attached. 18

19

ROBERT HYENNS,

1 MODERN. 8vo,

are very much older 19

(45), mostly of the 20

royal 8vo and 4to,

21

deur Militaire et 22

c. 1837. 23

24

the finest engraved

gins, 17 x 22, 1.00. 25

26

O GLASS, celebrated

facsimile autograph 27

28

Miott, (Gen. Geo. Aug.) *Governor of Gibraltar*. Fine old port., with naval battle scene beneath. 4to, oval in square, 35c. 29

Another very fine portrait after SIR JOSHUA REYNOLDS. Royal, 4to, 60c. 30
Cadell, 1813.

He successfully resisted for 3 years the *Historic Siege of Gibraltar* against the united strength of France and Spain, for which he was raised to the Peerage with the title of Baron Heathfield, and died in 1790.

Manners, (John), *Marquis of Granby*. A fine old folio mezzotint, after SIR JOSHUA REYNOLDS, 50c. 31
Commander-in-Chief, 1766.

Portraits, CARDINAL RICHELIEU; ARMANOUS DE BIRON POLEMARCHUS, killed in 1592; LUDOVICUS TRIMOVIÈLE, killed in battle about 1525; DUNOIS, (Joahes). A large folio portraits, margins of some cut close, 1.50. About 1630. 32

Four well known names in history, the first and last especially so. DUNOIS was the bastard of Orleans and shared with JOAN OF ARC the honour of raising the siege in 1429. A persistent opponent of the English and conquered Normandy 1448. They are a uniform series of 4 in fair condition, but of course time worn.

Portraits, (30), of EMINENT FRENCHMEN and ITALIANS, including Kings, Emperors, Philosophers, and Generals. Mostly 8vo, on large and some on India Paper, 1.50. Mostly 40 years old. 33

Portraits, (28), mostly French, including Baron Halle, Lavater, St. Frances de Sales, Alciati, of Emblem Fame, Warren Hastings, Steel, Etc. Mostly 8vo, on large paper, 1.75. 34

Historical Portraits, (old), of the QUEENS and LADIES of the COURT OF FRANCE (45) 4to and 8vo, including the celebrated DUCHESS DE BERRY, 1695-1719, MARIE ANTOINETTE and MADAME ELIZABETH, 3.50. 35

Portraits (45), of MEDICAL MEN and MEN of SCIENCE, 17th, 18th, and a few of the 19th century. Folio, 4to and 8vo; mostly French, but includes one of JOHN FERRIAR, M. D., engraved by BARTOLOZZI, after an original drawing by T. STOTHARD. Folio, 3.50. 36

Portraits, (50); EMINENT MEN of LITERATURE and SCIENCE of the last century, including CUVIER, SIR ISAAC NEWTON, PASCAL, VOLTA, ALBINUS, FRESNEL, ARAGO, SIR HUMPHREY DAVY. A very fine and uniform series, imp. 8vo, on India paper, 4.00. Paris, about 1860. 37

French Revolution of 1830. 35 CONTEMPORARY ILLUSTRATIONS, some 4to, but mostly large folio, on stone or steel, some coloured caricatures, including one published in London, STORMING THE TUILERIES, 3 large plates exhibiting above 50 PORTRAITS of the principal actors in this great Historical Drama, large, important and interesting views of street scenes, conflicts between the police, the people and the National Guards, etc., etc., 4.50. 38

Castle Howard Collection of THREE HUNDRED FRENCH PORTRAITS, representing PERSONAGES of the COURTS of FRANCIS I., HENRY II., and FRANCIS II., by FRANCIS (or Janet) CLOUET, painter to the French Court; autolithographed from the original chalk drawings at Castle Howard, Yorkshire, by LORD RONALD GOWER, a trustee of the National Portrait Gallery. Two splendid volumes, atlas 4to, cloth, gilt, 14.00. published at six guineas. 1875. 39

A selection of 25 fine and large HISTORICAL PORTRAITS, duplicates of the above magnificent work, unbound, 2.50. 40

This fine and invaluable collection of authentic and life like Portraits, made by Janet (or Francis) Clouet, has never been published previously. They are in the exact style of the originals and should go with Holbein's Portraits of the Court of Henry VIII and some of those in this catalogue, the persons represented being contemporary.

Costume, a Knight Commander of the Bath, a Knight of the Garter, a member of His Majesty's Privy Council, a member of His Majesty's household, a Duke, the Lord Mayor of London, each in the full dress Robes of their respective offices. Beautifully engraved on India paper, large folio, and nearly uniform, 2.00. Published by Sir Geo. Naylor Garter, July, 1821. 41

4 PORTRAITS—HISTORICAL AND MISCELLANEOUS.

- Ancient Armour.** 24 FINE OLD COLOURED PLATES (folio), consisting of PORTRAITS, of ENGLISH NOBLEMEN of the MIDDLE AGES, in the armour and costume of the period. *Beautifully coloured* 3.25. 43
- Including ALEXANDER 1ST, KING OF SCOTLAND, 1107; DAVID, EARL OF HUNTINGDON, 1120; SIR JOHN HAIRSCH, 1384; DE VERE, EARL OF OXFORD, 1380; THOS. BRAUCHAMP, EARL OF WARWICK, 1370; etc.
- Another lot duplicates, only 8 in number, but includes portrait of ALEXANDER, KING OF SCOTLAND, and PETER, EARL OF RICHMOND, 1.00. 43
- Another lot, only 4 in number, but contains ALEXANDER, KING OF SCOTLAND, 50c. 44
- Eighty-six Historical Portraits** and ENGRAVINGS, mostly by SMIRKE, from Boyer's Sumptuous Edition of Hume's England. Large folio, wide margins and in fine condition, 6.50. London, the Historic Gallery, 1795, etc. 45
- The entire work was issued in 70 parts, and was published complete in 1806 at a cost of seventy guineas.
- Historical Portraits** (10) 8vo, including the Duke of York, Shakespeare, the Medicis Family, Clement (Alberic) du Mez, Cardinal de Retz, etc., 60c. 46
- Portraits of Popes** (6), 8vo, *extra full margins*, 40c. 47
- Includes Gregory XIII. and XIV., Urban VII., Innocent X., Paul V., etc.
- Coysevox** (Antoine), *An Eminent French Sculptor who excelled in Portraits and Busts.* PROOF PORTRAIT BEFORE LETTERS, large margins, 15c. 48
- Jenkinson** (Charles); 8vo Portrait. 20c. About 1800. 49
- Another copy, on large paper. 30c. 50
- Lord Hawkesbury** (afterwards LORD LIVERPOOL), Secretary of War under LORD NORTH, and President of the Board of Trade under the Younger PITT. 51
- Moore** (Thomas, *The celebrated Irish Poet*); nice 12mo, port. (oval); engraved by Heath, 20c. About 1830. 52
- Fischer** (Jean, *Bishop and Cardinal*). *A nice old 12mo portrait, fine margins*, 20c. About 1750. 53
- Celebrated in history for his opposition to LUTHER. He invited the great ERASMUS to Cambridge and had him appointed professor of Greek. He denounced HENRY VIII. for divorcing CATHERINE of ARAGON; after the King's marriage with Anne Boleyn, he was brought to trial and executed, 1535.
- Portraits of Ladies.** BLANCH SOMERSET, BARONESS ARUNDELL, royal, 4to, *proof on India paper*, 1820; ELIZABETH, Queen of Bohemia, *daughter of King James I*, royal 4to, 1824; *proof on India paper*, and 2 others, 1.25. 54
- Portraits** (10); including WELLINGTON, WORDSWORTH, COWPER, after LAWRENCE, and BARTOLOZZI, BEETHOVEN and others; *some proofs*. 2.00. 1805, etc. 55
- Portraits** (8) mostly folio. Including LORD CLARENDON, ELIZA COOKE, SIR E. COKE, 1629; LORD CLIFDEN, and a very fine and large tinted portrait of QUEEN CHARLOTTE; 2 *proofs*. 2.00. 56
- Portraits of Ladies** (9); 1 large 4to, the others 8vo; includes MRS. BEECHER STOWE, MARIE STUART, COMTESSE DE GRAMMONT, JOSEPHINE, LADY MORGAN, etc.; 40 to 50 YEARS OLD, 1.00 57
- Another lot, duplicates of the above, but only 7 in number, 60c. 58
- Another lot, only 6 in number, 50c. 59
- Each lot has the Hamilton and the Beecher Stowe portraits.
- Steel Portraits** (12 fine) including KATHERINE PARR, MARGUERITE of FRANCE, MATILDA of SCOTLAND, QUEEN CAROLINE, MARGARET of ANJOU, LADY JANE GREY, QUEEN VICTORIA, and others. Royal 8vo, 40c. 60
- Portraits** (40) of the MOST CELEBRATED PAINTERS, including VAN DYCK, RUBENS and HOLBIN, mostly of the 17th and 18th centuries. Folio; 4to and 8vo, 3.50. 61
- (2), *large and fine*, folio, SAMUEL ROGERS; engraved by H. MEYER, from a drawing by STR THOMAS LAWRENCE, a fine portrait of REV. H. BROOMHEAD. 1.00. 1822. 62

Portrait (a) LINGUIST, a This is a pro
 Ackerman,
Bodley (Sir the original 1.25. About
Portrait A W. DERBY.
Portrait C Holyrood F
 Cardinal an Religion in Sec
Portraits: BAKER, 4to present cen
 (30)
 OVERALL, 18th centur
 (30)
 HOADLY a 3.00.
English E DEAUX, SA Devils," A 4to and 8v
English H of GENER JOSHUA R
English a THOS. DI
Historica HENRY V FORD, on
Portraits and fine—
Portraits folio, 4to, useful an
Portraits GEO: HE
Kossuth stone, 26
Historio of the m specimen G. Cook
Court Al CRACY a drawings gilt edge.

- Portraits**, of the period. 42
- MUNTINGDON, CHAMP, EARL 43
- ALEXANDER, 43
- SCOTLAND, 44
- MIRKE, from 44
- ns and in fine 45
- s at a cost of 45
- akespeare, the 46
- 47
- Portraits and** 48
- 49
- r under LORD 50
- 51
- ; engraved by 52
- e margins, 20c. 53
- eat ERASMUS to 53
- ENRY VIII. for 54
- he was brought to 54
- LL, royal, 4to, 54
- of King James 54
- er LAWRENCE, 55
- i, etc. 55
- E, SIR E. COKE, 56
- QUEEN CHAR- 56
- MRS. BEECHER 57
- LADY MORGAN 57
- OC. 58
- 59
- ITE of FRANCE, 60
- OU, LADY JANE 60
- DYCK, RUBENS 61
- 8vo, 3-50. 61
- MEYER, from a 62
- ROOMHEAD. 1.00 62
- Portrait** (a fine folio) of Dr. Bowring (*afterwards Sir John*), PHILOSOPHER and LINGUIST, and Editor of the "Westminster Review." 1.00. 1821. 63
This is a proof on India paper, and has in India pencil "For Alex. Chalmers, Esq."
- Another very fine portrait of SIR JOHN Ackerman, 1844. Folio, on India paper, 1.00. Pub. by 64
- Bodley** (Sir Thomas); *Founder of the Bodleian Library, Oxford*; FINE PORTRAIT from the original by JANSON in the Bodleian Gallery. Large folio on India paper, PROOF, 1.25. About 1820. 65
- Portrait** ARCHIBALD CAMPBELL, MARQUIS of ARGYLL, from the original by W. DERBY. *Fine folio, on India paper, proof*, 1.00. About 1820. 66
- Portrait** CARDINAL BEATOUN, by Hilton. Folio, on India paper, from the collection at Holyrood Palace, proof, 75c. 67
Cardinal and Archbishop of St. Andrews, a most formidable opponent of the Reformed Religion in Scotland. Born 1494, and was assassinated in 1546.
- Portraits**: G. COURTHOPK, folio, *fine private plate*; MR. SAPIO, folio; WILLIAM BAKER, 4to, engraved by S. W. REYNOLDS. 1.00. 1824. 68
- (30). *Some very fine, proofs before letters*, etc., folio and 8vo, 1.50. During the present century. 69
- (30) of ENGLISH BISHOPS and CARDINALS, including WHITE, KENNET, OVERALL, JOHN FISHER, LAUD, PARKEK, etc., folio, 4to and 8vo, 3.00. 17th and 18th century. 70
- (30) of ENGLISH BISHOPS and CARDINALS; including a fine folio of BISHOP HOADLY after HOGARTH; CARDINAL ALLEN, BISHOP BURNETT, folio, 4to and 8vo, 3.00. 71
- English ECCLESIASTICAL PORTRAITS** (50), including ROWLAND HILL, DEAN PRIDEAUX, SAMUEL BURDER, JOHN MACGOWAN, *the well known author of "Dialogus of Devils,"* ANDREW KIPPIS, GEO. WHITEFIELD, LINGARD the Historian, etc. Folio, 4to and 8vo. 2-75. 72
- English HISTORICAL PORTRAITS** (10), including a fine folio of SIR THOS. MOORE, of GENERAL MONMOUTH, portrait of DAN O'CONNELL; also, a *fine proof* after SIR JOSHUA REYNOLDS, etc. 1.25. 73
- English and CONTINENTAL HISTORICAL PORTRAITS**, including SIR PHILIP SIDNEY, THOS. DIRDEN, LORD CLARENDON, etc. (50). Folio, 4to to 8vo, 3-50. 74
- Historical PORTRAITS**, mostly English (11), including ALGERNON SYDNEY, SIR HENRY VANE, *fine folio*, LORD WILLIAM, LADY ANN and LADY ARABELLA STRAYFORD, on one plate; includes also a very fine folio of FRANCIS I. 2.00. 1639-1742. 75
- Portraits** of CLASSICAL AUTHORS of ANTIQUITY (42). 8vo. Many uniform on thick and fine—including some on India—paper. 2-50. Mostly about 1800. 76
- Portraits** (about 250) of Men mostly celebrated in English and French history, in folio, 4to, 8vo and 12mo, mostly from one to two hundred years old—an interesting, useful and valuable collection. 6-50. 77
- Portraits** of RT. HON. W. E. GLADSTONE, SIR ALGERNON BORTHWICK and MR. GEO. HENRY LEWIS, on India paper. Royal 4to, with letterpress. 50c. 77½
- Kossuth** (Louis), the celebrated Hungarian Reformer. Large and fine portrait on stone, 26x20. 1.00. *With the artist's compliments, 1851.* 78
- Historic Gallery** of Portraits and Paintings, Biographical and Descriptive Sketches of the most eminent men in every age and country, including some of the finest specimens of the arts, ancient and modern. Several hundred outline engravings by G. Cooke, 7 volumes, 8vo, cloth, 7-50. 1807-11. 79
- Court Album** (The) containing about 80 FINE PORTRAITS of the FEMALE ARISTOCRACY and COURT BEAUTIES of GREAT BRITAIN, engraved by the best artists from drawings by SIR JOHN HAYTER with letterpress. 7 vols., 4to, green and blue cloth gilt edges, 7-50. David Bogué, 1851-57. 80

Portraits of the GREAT FORTESQUE FAMILY; SIR ADRIAN, *about 1250, A.D.*; SIR JOHN, 1450, (about); EDMUND, 1647; JOHN, FIRST LORD, 1746; WILLIAM HENRY; HUGH, SECOND EARL; FRANCIS, COUNTESS OF CLERMONT; and THOMAS, THIRD LORD. A fine and uniform series, including one from the *Bodleian Library*, and others in the possession of the family, including one after Sir Joshua Reynolds, etc. 81
4to, *on fine paper, extra broad margins, Clean as when issued, 1.25. 1864.*

An Ancient Norman Family whose ancestors were shield bearers to William the Conqueror. They settled in Devonshire, and took an important part in the wars of the Roses. The celebrated work in Latin *DE LAUDIBUS LEGUM ANGLIÆ*, wrote by SIR JOHN when in exile, has survived many Thrones, and will always be consulted as an inexhaustible fountain of wisdom. For subsequent history see *Foss's "Judges of England."*

Characteristic Theatrical Portraits on steel of well known actors, (20), from an imp. 8vo edition of SHAKESPEARE, *all perfectly clean, 60c. the lot.* 82

Engraved PORTRAITS for ILLUSTRATING (40) LADIES of the ENGLISH NOBILITY, mostly of the present century, and with wide margins. Royal 8vo, 4to and folio. Including the Queen in her Coronation Robes. 2.25 the lot. 83

(50) Men of Science, etc., mostly Englishmen of this century. 4to and folio. Nearly all have wide margins. 1.50 the lot. 84

39 ENGLISH NONCONFORMIST MINISTERS, mostly 8vo, but includes one 4to of REV. C. H. SPURGEON; mostly of the early part of the century. 1.25 the lot. 85

Upwards of 50 KINGS and GENERALS, including a series of 10 folio and uniform of the KINGS of ENGLAND (about 1700); about 20 American Generals, etc., of this century; the others English. 2.00 the lot. 86

Portrait of an ARABIAN MARE given by Louis XIV. to Lord Petrie. Fine oblong, royal 4to, *on India paper.* THOS. DARIN and ANN LUCAS, Two Old People, *a very nice etching on India paper;* THE LOUVRE, etc., on stone, 15c. the three. 87

Soldier's Dream (The) *Lady in Contemplation.* Two very nice and suggestive engravings. Large folio, on china paper, full margins. 25c. 88

Bunyan's PILGRIM'S PROGRESS—set of 8 beautiful outline engravings, by H. C. SELONS, uniform in size. Large oblong folio, on India paper, *extra full margins.* 1.25. 89

Masterpieces in Ancient Sculpture (12). Fine and large photographs, mounted on extra thick cardboard, *soiled.* 1.25 the lot. 90

Cooke's Views on the THAMES; 36 of the FINEST PLATES from this *beautiful work,* on India paper, *mounted on old paper.* 3.00. Lon. 1829. 91

Roman Catholic and SCRIPTURE SUBJECTS, 12 large and 5 engravings, S. Luigi Gonzaga, Sic Magdalena, Marens Coelica Gaudia Querit, S. Antonio di Padova, S. Girolamo Sancti, Trinitas Unus Deus Miserere Nobis, etc., *some coloured,* all folio, and some elephant folio, in fine condition, 2.00. 1779, *all very old.* 92

S. LUIGI GONZAGA, *a beautiful coloured copy, 24 inches by 18, pub. about 1830.* 93

Also 2 large emblematic Catholic subjects same size but older, 1.00. 94

Emblematic subjects (4), S. Joseph, S. Maria Possaviensis, Muestra Senora de Belin, and another 24x18 with borders of drapery, 1.00. About 1790. 94

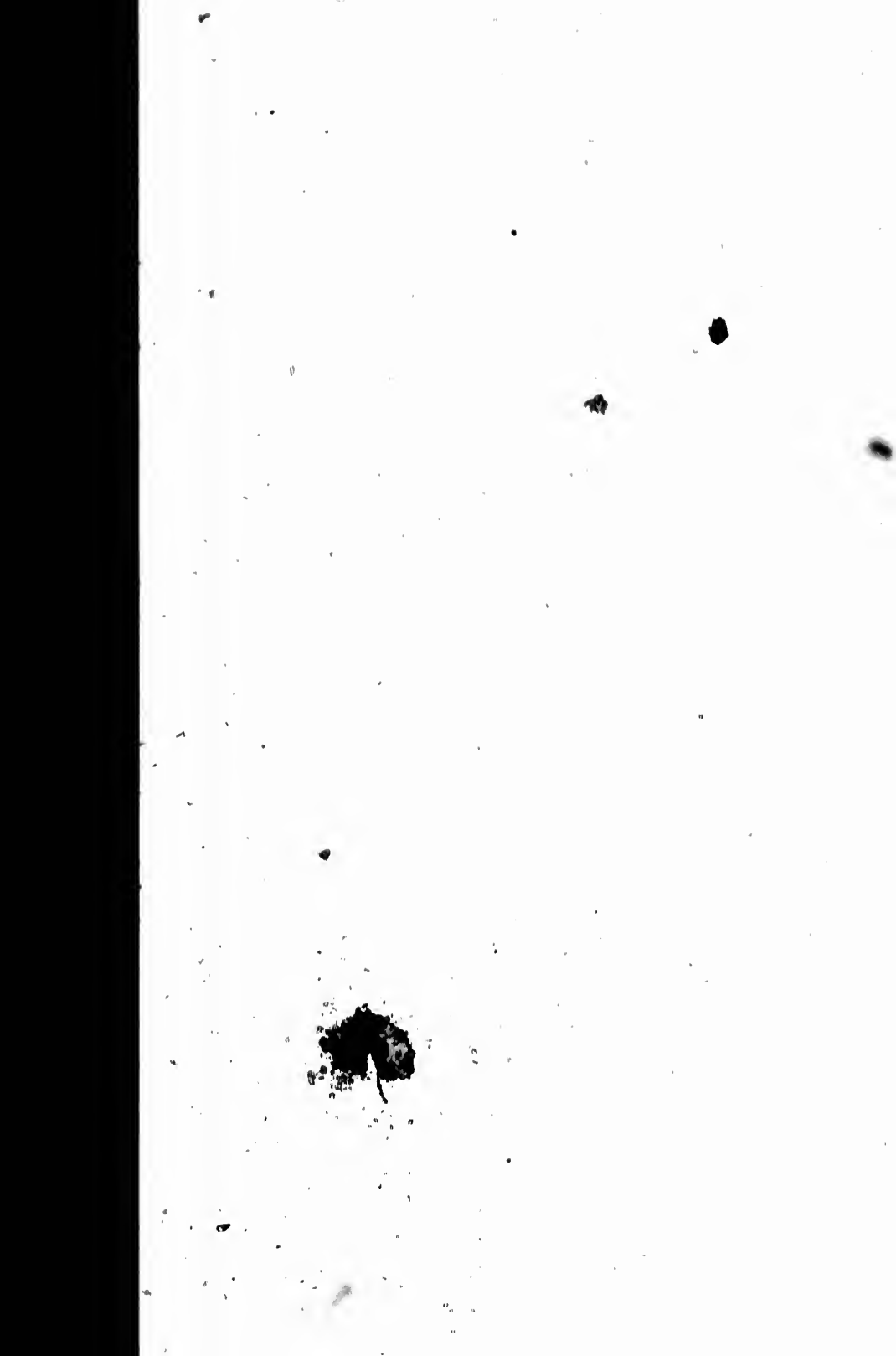
ECCE HOMO, AUXILIUM CHRISTIANORUM, "ATTENDITE ET VIDETE SI EST DOLOR SICUT DOLOR MEUS," and one other, set of 4, 24x18, *very fine engravings, uniform.* 2.00. Early part of this century. 95

Virgin and Child, *large metazo tint, 24x18 proof before letters, early in the century;* Sancta Maria Lauretana, *emblematic plate, 24x18;* Mater Dolorosa, *a folio steel engraving;* Verbum Coro Factum, *folio steel; another colored, Our Lord on the Cross.* 1779. 1.00. 96

SAMSON ET DALILA, LOT et ses FILLES-RENCONTRE D'ISAAC et de REBECCA, CAELIS et AXA SA FILLE, UNUS VESTRUM me TRADITIONE est, set of 5, 24x20, oblong folio, FULL MARGINS, a SPLENDID SERIES OF ENGRAVINGS by SMIRK and OTHERS, 3.00. This fine set cannot be described as Catholic. Pub. early in the century. 97

Another copy of the *beautiful plate* by SMIRK, also CAELIS et AXA SA FILLE, SIC DEUS DILEXIT MUNDUM, S. LUGI GONZAGA, and THE LAST SUPPER of OUR LORD. 5 engravings large and fine, 3.00. Early in the century. 98

- ECCE HOMO, fine colored engraving, 24x19; MATER DOLOROSA, colored large folio; SIC DRUS DILIXIT MUNDUM, fine engraving, 24x15, 1.00. All early part of the century. 99
- S. MARIA MADDALENA, Ego Mater Pulchrae Dilectionis, Causa Nostrae Laetitiae. Three large and fine engravings, 24x15, nearly uniform. 1.25. Early part of the century. 100
- ON THE JOURNEY TO EGYPT—large old engraving, last century; Puer Jesus Pergens in Ægyptum, 4to; Ecce Mater Dei, large folio. Early part of the century; and another. 1.00. 101
- MARIA MADDALENA—very fine large 4to, BARTOLOZZI, oval in square; also, Sacra Familia, Sacra Sacrista Famili, Ego flos campi liliun convaelium, 3 large plates folio, full margins (after Corregio and others). 1.75. Early part of the century. 102
- Another very fine duplicate of the Bartolozzi, but with still larger margins; also, Ecce Mater Dei, a fine folio oval, 2.00. Early in the century. 103
- SCENES IN THE WILDERNESS, etc., series of 4, after Raphael and others, oblong folio. Another series of 4 Scenes in the Life of Jacob, etc., fine engravings after Kauffman, large oblong folio. Another series of 4 Scenes in the Life of Abel and Abraham, etc., large folio, 1.50. All pub. early in the century. 104
- MATER AMABILIS, Mater Pulchrae Dilectionis, a pair, oval folio, tinted. Vera Imago Salvatoris, Nostri Jesu Christi, large folio colored; Sacra Familia, large folio, 1.00. All published early in the century. 105
- ECCE MATER DEI, 18x24, Nolite Timere—Scene from Luke, 2nd chapter, verse 10. Oblong folio, 26x20. Sancti Trinitas—Unus, Deus Miserere Nobis; Sanctus Martinus. A pair, 23x18, 1.00. End of the last century. 106
- Another pair, uniform in age and size—SANCTA TRINITAS, etc., and SANCTUS MARTINUS; also, our Lord's Last Supper, fine old emblematic plate, 75c. End of last century. 107
- Sacramentorum Institutio, Baptismi Sacramentum, Confirmationis Sacramentum, Pœnitentiæ Sacramentum, Extreme Unctionis Sacramentum, Ordinis Sacramentum, Matrimonii Sacramentum—set of 7, after NOVELLI, oblong folio, 1.00. Early in the century. 108
- ELISABETH CUM JOACHIMO et JO. BAPT.—Sacra Christi Familia: two fine and uniform squares, full margins. Sacra Familia Puer Jesus Pergens in Ægyptum. All large folio, 1.25. Early part of the century. 109
- SCENES in the LIFE of our LORD—set of 4 large and fine engravings, oblong folio, with full margins, 26x50, 1.50. Early in the century. 110
- La Señora S. Catherina Virgin, Ymartyr S. Joseph, S. Maria Passaviensis, and one other. All large, 17x23, folio and uniform, 1.00. The last century. 111
- SCENES from the LIFE of JACOB, after RAPHAEL. Oblong folio, colored. 1.00. The last century. 112
- THE FIRST LIVING Mourning at the Grave of the FIRST DEAD: Adam Bearing the murdered body of Abel—a fine pair, folio; also, the Prodigal Son—6 plates, oblong folio, 1.25. In the last century. 113
- ABRAHAM before the ANGELS, Gen. xviii.; Cain and Abel; Joseph Telling his Dream; Moses with the Law—set of 4, large oblong folio, 1.00. In the last century. 114
- S. Maria Maddalena in Prayer—large folio, very fine; HEAD OF OUR LORD—oval in square, large folio; portrait of Pope Innocent XI. 1.25. All published in the last century. 115
- CHRIST taken from the Cross, DONATELLO (1809), and two other Scripture and Catholic subjects, tinted; Our Lord's Last Supper, after RAPHAEL. All oblong folio, 1.25. 116
- Madonna di Guido, S. Anna, S. Giovacchino, 2 folio tinted plates, fine. Last century, uniform. Santa Cecilia, St. Sebastien, and others. Together 10, 1.25. 117



8 PORTRAITS—HISTORICAL, ETC.—OLD AMERICAN PORTRAITS, ETC.

— LA VIERGE, after RAPHAEL, folio; THE LAST SUPPER, after RAPHAEL, oblong folio; large emblematic plate VIRGIN and CHILD, etc., and 8 other Scripture subjects. *Some proofs before letters, an interesting lot, 1-50.*

— MARRIAGE de ST. CATHERINE, ST. MAURICE, La mort de St. Joseph, Ecce Homo, St. Jean Baptiste, etc., 13 large and fine old engravings, folio, and oblong folio, 1.50. Paris, 1749-50. 119.

OLD AMERICAN PORTRAITS AND VIEWS.

American Portraits. Generosissimus RENATUS LAUDONNIERUS, Franciæ in American classis dux 1598. *A rare portrait, 8vo, mounted, has the dedication beneath, 1.00.* 120

— Franciscus Dræck, a rare old portrait, Latin inscriptions beneath, 75c. 121
A Paris about 1600.

— Matoaka als Rebecca fillia Potentiss Princ Powhatani, imp. Virginia, Etatis 1616. *A rare old portrait, 4to, with inscription beneath in English, 1 25.* 1793. 122
The daughter of a celebrated Indian Chief who ruled over a tract of country in the vicinity of James River, Virginia, and died in 1618. His daughter, whose portrait we are about to dispose of will be known to posterity for her heroism in interceding for the life of CAPTAIN SMITH, who was condemned to death by her father. She became a Christian, and was married to John Rolfe, and among her descendants in Virginia was the celebrated John Randolph.

Fenimore Cooper (Who, as W. C. BYRANT says, "wrote for mankind at large.") Portrait after Johannot, 8vo, *a nice square, full margins, 25c.* Paris, about 1840. 123

Henriette Beecher Stowe 4to, port. on stone *D'Abres un Daguerreotype fait a New York, 25c.* About 1850. 124

Webster Daniel, Bentley, 1850; FRA PIZZARO; 2 very old ports; LAS CASAS, 8vo, and 12mo; also Avanturiers des Bouchaniers, engraved title-page, only full margins of about 3 inches, 50c. 1743. 125

Etched Portrait. Folio. 75c. About 1850. 126

We have reason to believe this to be a portrait of the well known American scholar and author, CHAS. G. LELAND, and descendant of the great English antiquary of the same name.

Portraits. POLK (James Knox), 11th President of the United States (1845); large contemporary colored portrait on stone, 9x11, broad margins; also, a fine large portrait on India paper, *believed to be that of an American musician.* 1.00. 127

— Washington (Gen.) Fine portrait, grave par BLANCHARD, apres COULDER. Folio on India paper, *wide margins.* 1.00. 128

This nice portrait has a light line across the face, perceptible but not damaged.

— Francois Xavier du Plessis, Missionnaire de la Compagnie de Jesus ne a Quebec en Canada, le 13 janvier, 1694. 8vo, oval portrait in square, nearly contemporary, little margin. R. P. CORNELIUS, BEYDIN, *dictus* GODINEZ e Soc. Jesu in America—*pierced with arrows, 1650; and three others (2 proofs).* 1.25. 129

— BOYER, President de la Republic d'HAITI. Large lith. portrait, folio, 50c. About 1840. 130

Jean Piere Boyer was a mulatto, born in 1776, President of the Island of Hayti 1822, deposed 1843, and died at Paris 1850.

— BENOIST (Joseph, Flaget), Eveque de Bardtown, Kentucky. Large portrait on stone, on china paper, 12x15. 50c. 1839. 131

— WILLIAM PENN, JAMES BUCHANAN, American President, Andrew Jackson, and four other portraits, 1.00. From 1837. 132

— CHEVERUS (Jean de), Sacri Premier Eveque de Boston, etc., a 4to portrait on stone, 30c. 1810. 133

— FRANKLIN PIERCE, *President d'Amerique, in uniform;* also, Fauvel Gouraud, Vice-consul de France, Newport, Rhode Island. 8vo. 25c. 134

— Vespuce (Americ), Navigateur, 1516, a 4to *modern portrait,* and three other portraits, 8vo, 35c. 135

Gen
de la Repu
and Guiana
Pizz
also 2 mod
Las
Casas, 50c
Co
American
etc., 1.00.
In
Americans
mostly fol
Po
Queens of
press ben
Be
portrait, 4
HULTAZO
1718, ver
E
MILIE at
INDEPEN
E
Rapp Or
Nouveau
1870; al
Vernet (e
de Sava
square,
Philadel
de Chan
Frankl
square,
1.00.
par LE
Famil
large f
and In
of FR
margi
FERD
differ
be fo

S, ETC.

RAPHAEL
Scripture
118
eph, Ecce
long folio,
119.
rae in
on beneath,
120
eath, 75c.
121
ae, Etatis
1793. 122
vicinity of
to dispose of
TH, who was
John Rolfe,
at large.")
about 1840.
123
otype fait a
124
CASAS, 8vo,
margins of
125
126
r and author,
; large con-
arge portrait
127
s COULDER.
128
e Jesus ne a
arly contem-
Soc. Jesu in
129
ait, folio, 50c.
130
1822, deposed.
Large portrait
131
drew Jackson,
132
to portrait on
133
uel Gouraud,
134
nd three other
135

- Gen. Gaudalope Victoria, Presidente de los Mixicanos, el Gen. Rosas, Pres. de la Repub. Argentina. Ed Thompson, Commander of the forces in Barbadoes and Guiana; and three others. Royal 8vo, 1.00. 136
- Pizarro (Francesco), a large folio, a 4to, 2 12mos, all different and all very old; also 2 modern portraits of the same, 75c. 137
- Las Casas, three portraits, 12mo and 8vo; also, 4to plate, *Maladie de Las Casas*, 50c. 138
- Cortez (Ferdinand), and nine other portraits of old Peruvian and South American Indian warriors, mostly 4to and folio, from ancient works relating to Mexico, etc., 1.00. 139
- Indian Women; *Femme Virginienne*; *Rein des Carolines*; *Habits of the Americans*; *Six Indiens Osages*, *Arrives de Missouri a Paris, 1827*, etc.—7 plates, mostly folio and old, some colored, 1.25. 140
- Portraits (9), showing the *peculiar costume*, etc., of the ancient Kings and Queens of FLORIDA—all folio, mostly with broad and fine margins, and with letter-press beneath in French, 1.50. 141
- Bolivar (Simon), *Liberator of South America and President of Columbia*, folio portrait, oval in square; AYHABALIBA, *ultimus Rex Peru*, very old; MELECH AUG. HULTAZOB *Printz Americaner*, aus der PROVINTZ CANADA aus Achem, etc. Anno 1718, very old folio, 1.25. 142
- Bolivar. *Portrait on stone, folio, soiled*. PORTRAITS in outline and FACSIMILIE autographs of all those who signed the ever-memorable DECLARATION OF INDEPENDENCE, 8 inches wide by 30 in length, about sixty years old, 60c. 143
- ETCHINGS, CHRISTOPHE COLOMB, au Convent de Sainte Marie de Rabida, Rapp Ortant aux rois Catholiques les richenes couquises sa premiere Expedition au Nouveau Monde, 2 fine etchings, small 4to, full margins. Par EUGENE DELAVROIX, 1870; also, ATALA and RENE, proof before letters. 2.00. 144
- Vernet (Claude Jos.) OLD AMERICAN VIEWS, (set of four). Du Port Royal, Port de Savana, Port de Fredericksbourg, Port Philadelphia, a very nice egg-shape, oval in square, 6x8½, full margins, 1.00. Last century. 145
- Vue du Port de Savanah, Port de l'Havane, Port de Fredericksbourg, Port Philadelphia, set of four, numbered, uniform with the last, but on LARGER PAPER, 1.25. 146
- Another set LARGE PAPER COLORED, 1.25. 147
- Entree dans la Bay de Chesapeak, Port de Quebec, Port de Boston, Port de Charles Town, set of four, *Gravee d'apres le Tableau de Vernet*, 1.25. 148
- Franklin (B.), *Philosopher and Statesman*, fine portrait by ST. AUBYN, oval in square, large margin, fine impression, 2.50, rare, 1777. 149
- A Duplicate of the above, in fair condition, but no margin and not so bright, 1.00. 150
- VERY FINE PORTRAIT, a square (5x6) of Franklin when a young man, grave par LEVY, extra full and large margin, in fine state. 1.00. 151
- Portrait (A FINE LITHOGRAPH, by VILLAIN), Peint d'apres nature pour la Famille; expose au salon de 1779; folio, good margins, 60c. 152
- Another FINE LITHO, par AUG. BRY—*Franklin looking in another direction*, large folio, 60c. 153
- Portraits—*an old oval*, 4to, cut close, mounted; another (old) 8vo, on large and India paper, scarcely finished, proof before letters; and three other (old) portraits of FRANKLIN, by DUTILLOIS, BOUVIER, et FERDINAND, 8vo and 12mo. 1.00. 154
- Another copy of the PROOF, same state; also, a fine old oval, 8vo, with full margins and in very fine state, not the same oval as in last lot; also, a fine copy of the FERDINAND portrait. 1.25. 155
- 7 Portraits of FRANKLIN, 12mo and 8vo, two Proofs, one on India paper, all different, and clean, 1.50. 156
- FRANKLIN Portraits (4), 1 Proof, 12mo and 8vo, a copy of each of which will be found in one or other of the above lots, 60c. 157

- Vue de Canada.** Four numbered and curious old 4to upright oval views after COXEN, broad margins. 1.00. Last century. 158
- Mort du GENERAL WARREN a la Bataille de Bunker's-Hill, apres de Boston, le 17 Juin, 1775, a very nice old engraving, 8x12, with full margins, 1.25.** Early part of the century. 159
- Mort du GENERAL MONTGOMERY a l'Attaque de Quebec dans l'Amerique Septentrionale en Decembre, 1775, uniform in size and age with the last, 1.25.** 160
- America l'Amerique Independante, Allegorie, large folio, fine impression before the Dedication. 2.00.** 161
- Aleasse dans le Royaume de Tumbes, Consecration de Cora au Culte du Soleil, et Devouement sublime du Cacique Henri, three very fine and large folio engravings with descriptive text in French beneath, 2.00.** Early part of the century. 162
- Hicks (C.E.) Compositions from THOS. CAMPBELL's celebrated "Gertrude of Wyoming," 12 fine outline plates, oblong folio, title a little foxed, 75c.** Art Union of London, 1846. 163
- Quebec, Death of GENERAL WOLFE, the fine and rare plate engraved by WOOLLETT after the celebrated painting by WEST, mounted and rubbed; the sides and top margins are close, the bottom with letterpress being full—a bargain for 2.25.** Lon. 1776. 164
- General Wolfe, Death of, from a smaller plate engraved by LAUNAY, after WEST, oblong, 16x13, about one inch margins, 2.00. 165
- DER GENERAL WOLF—nice old engraving by GUTTENBURG after WEST, mounted, 9x12, 1.50. 166
- MORT du General Wolfe a la bataille de Quebec, dans l'Amerique—nice old plate, 12x8, fine margins above three inches wide, 1.25. 167
- General Wolfe killed at Quebec, oblong folio plate, from Ashburton's History of England, 1792, 40c. 168
- The Death of General Wolfe, dedicated to the lovers of little things and cheap buyers, a very nice little old plate after West, 8x7, 50c. About 1780. 169
- Another copy of the last, a little water-stained, 35c. 170
- Levis (Francis Gaston, Duc de), MARECHAL de France, 1787, a nice 8vo, portrait, extra fine and wide margins, 9x12 over all, 30c., grave par J. PORREAU, Envoys au Canada pour remplacer Montcalm.** About 1830. 171

DAVID ROBERT'S HOLY LAND—VARIOUS PARTS AND PLATES.

- The Magnificent Folio edition of the HOLY LAND, IDUMEA, EGYPT and SYRIA, by DAVID ROBERTS.** We have some of the original parts, including letterpress in clean and fine state, as tabulated below, separately and according to subjects, and offer the same at about one-fourth the original cost. They are lithographic engravings of the highest order. The smaller plates measure 9 inches by 12 across the page, and the larger ones 13 by 19, not including the margins. It is without doubt the grandest work published during the present century. We are quite sure those who have visited these grand associations of the past, and those who may purchase them for framing purposes, will be equally well pleased with these SPEAKING PICTURES of some of the grandest subjects which can occupy the mind of man.
- Interior of the Greek Church of the Holy Sepulchre, folio; Tomb of St. James, half size; Jerusalem from the road leading to Bethany, folio; Entrance to the Tomb of the Kings; Mosque of Omar; The Holy Sepulchre; Pool of Bethesda, folio; Tower of David; Fountain of Cana; Cana, folio; The Town and Sea of Tiberias, 2 plates, folio; Jacob's Well at Shechem; The Town of Nablous, folio; Ancient Samaria, folio, etc. 20 plates. 2.50 the lot. 172**
- Tomb of Zechariah—Jerusalem from the South, folio; Exterior of the Holy Sepulchre; Shrine of the Holy Sepulchre, etc. 1.25. 173**
- The Golden Gate, Church of the Purification, folio; Crypt of the Holy Sepulchre, folio; Upper Fountain of Siloam; Jerusalem from the Mount of Olives, folio. 1.25. 174**

- Fountain of Absalom;**
Arabs of the folio; Ancie
Mount Tab
 Santa, Na
 Town of T
 Well at Sh
Sidon from
 Balbec, 4
 Bethany.
Confere
 Necropolis
 Mount Si
 Chapel of
Summit o
 of Sinai;
 Mount H
 to Mount
 These bea
 convent, of th
Miscellan
 Holy Sep
 All the at
Canova.
 portraits
 the lot.
 Antonius
 both of the
 purchase an
Selected
 together
 URES in
 2.00 the
Illumin
 sheets
 well ad
L'Innoc
 engrav
Flower
 75c.
Henric
 a pair
Bible
 Vedus
 and u
 squar
Femal
 Regr
 2.50.

- 158
 160
 161
 162
 163
 164
 165
 166
 167
 168
 169
 170
 171
- Fountain of Job (The), Pool of Siloam, Citadel of Jerusalem, folio; Pillar of Absalom; Mount Calvary, folio.** 1.25. 174†
Arabs of the Desert, El Dier Petra, folio; Encampment in Wady Araba; Petra, folio; Ancient Watch Tower; Temple at Petra, folio. 1.00. 175
Mount Tabor from the Plain of Esdraelon; Nazareth, folio; Convent of the Terra Santa, Nazareth, folio; Shrine of the Annunciation; Church of the Annunciation; Town of Tiberias; Sea of Tiberias, folio; Tomb of Joseph at Shechem; Jacob's Well at Shechem, folio. 1.50. 176
Sidon from the North; Sidon, looking towards Lebanon, folio; Citadel of Sidon; Balbec, 4 plates, folio Jenin, Bethlehem, 2 plates, folio; Shrine of the Nativity; Bethany. 2.00. 177
Conference of Arabs: Acropolis, in the valley, folio; The Ravine, folio; The Necropolis; Site of Petra; Island in the Gulph of Akabah; Convent of St. Catherine; Mount Sinai; Encampment of the Aulad-Said; Rock of Moses, Mount Horeb; Chapel of the Convent of St. Catherines, Mount Sinai. 2.00. 178
Summit of Mount Sinai—Ascent of the lower range of Sinai, folio; The Summit of Sinai; Convent of St. Catherines, folio; Chapel of Elijah; The Convent, with Mount Horeb, folio; Interior of the Convent, folio; The Wells of Moses; Approach to Mount Sinai, folio; Suez, folio, etc. 2.00. 179
 These beautiful plates were finished in 1839, ten years previous to the discovery, in this same convent, of the priceless "CODEX SINAITICUS," by F. KONSTANTIN TISCHENDORF.
Miscellaneous Plates (21) from the above great work, including the Shrine of the Holy Sepulchre; Tyre and Sidon; St. Jean d'Acre, etc., 7 of which are folio. 1.50. 180

All the above plates are in perfect condition.

Canova. About 80 4to, tinted and finely executed outline plates, consisting of portraits of celebrated individuals, models, monuments, groups of figures, etc., 1.25 the lot. 181
 Another lot about 70, mostly different, 1.00 the lot. 182

Antonius Canova has the reputation of being the greatest sculptor of the age, and either of the above lots will be appreciated by the customer who may have the wisdom to purchase and the money to spare.

Selected Pictures from the Art Treasures of America, parts 1, 2, 5, 8, 10, 11, 14† together 7 parts folio, clean as when issued, and comprising 28 very FINE PHOTOGRAPHS in the finest style, besides numerous wood engravings accompanied with text. 2.00 the lot, cost 7.00—Philadelphia, George Barrie. 183
Illuminated Quotations from the Scriptures, the Standard Poets, etc., on 20 4to sheets of thick paper, uniform in size and on one side only, very neatly executed and well adapted for framing, a scrap-book, or a screen, 30c. 184

FINE OLD ENGRAVINGS, ALLEGORICAL SUBJECTS, ETC.

- L'Innocence, La SOLITUDE, La DECOUVERTE, La DISTRACTION, 4 large folio engravings, 1.00.** Early part of the century. 185
Flowers for FAIENCE—Set of 6 fine and large old VASES of FLOWERS, folio, plain, 75c. Early part of the century. 186
Henriquet-Dupont. EXECUTION of LORD STRAFFORD and LADY JANE GREY—a pair, very large and fine, on china paper. 2.25. 1840. 187
Bibiena (Cavalier), a celebrated painter; died in 1756. Sala Reale, Cortile Regis con Vedusta di Prigione, Cortili Diversi Reali Giardius con Palazzo Reale, etc.; 5 fine and uniform old views of the palace buildings, sculptures, gardens, etc., about two feet square. 1.25. Circa 1740. 188
Female Figures, SOUVENIRS. Un Souvenir d'Amour, Le desir de Plaire, and Regrets. 4 very fine engravings, by S. W. REYNOLDS, full margins, large folio. 2.50. 1829, etc. 189

- Palemon and Lavina, Rosalina and Celia, Damon and Musidora, Damon and Delia, Lubin and Rosale**—5 oblong folio plates, after Lawrason and others; also, another set of four children feeding the birds, etc. 1.00. Early part of the century. 190
- Harmony, Geography, Historie, Desein, Poesie, Musique**, represented in six female figures, folio, *nicely colored*; also, CERES and POMONA after CIPRIANI. 1.25. Early part of the century. 191
- Cries of London**, after WHEATLY, R.A.—Set of 6, including "Sweet Oranges," "Milk Below," "Do you want any Matches?" "Primroses—two bunches a penny," etc. Large folio (*uniform*). 1.50. Early part of the century. 192
- Set of 4 fine engravings** after paintings by THO. STOTHARD, comprising CECILIA, two plates, THE POWER of INNOCENCE, and THE INNOCENT STRATAGEM. Engraved by Masetti; uniform in six large oblong folio, in fine condition; about 60 years old. 1.50. 193
- Hamilton (W.) THE FOUR SEASONS**—4 fine engravings, large oblong folio, 2.00. Early part of the century. 194
- THE MONTHS of the YEAR, from VIRGIL and OVID—a complete set of 12 fine large oval folio plates, *in fine condition*, 3.50. Early part of the century. 195
- Annette and Lubin**, in the dress of Norman Peasants—2 fine engravings, folio, 1.00. 1796. 196
- Four Hours of the DAY (The)**, from Ovid, etc., ECHO, IRIS, HERE and AER—4 very fine colored engravings after HAMILTON, COSWAY, etc., large folio, *uniform in size*, 2.25. Early part of the century. 197
- Seasons (The): FLORA, POMONA, CERES and WINTER**—4 fine colored oval, large folio engravings after Kauffman, 2.00. 1786. 198
- Twelve Months of the YEAR** after WENYSTER—12 oblong views of country life in France during the last century, 1.25. 1799. 199
- Another large and fine oval set by HAMILTON, *but wants February*, 1.25. Early part of the century. 200
- The Seasons**—set of 4 very fine engravings after WESTAL and WHEATLEY, royal 4to, 1.50. Early part of century. 201
- Les Fanours, Les Bergeronnettes a la Fontaine, La Peche a la Ligne, La Recolte des Fruits**—set of 4 folio, after HAMILTON, *colored*, 75c. Early part of the century. 202
- Le Bouquet bien Recu** after F. BOUCHER, and 8 other very fine old engravings, *mounted, no margins*, 2.00. Early part of the century. 203
- Mon. Moineau est POUR COLETT** after BOUCHER, Mort du Chevalier d'Assas, Oct. 1760, and 14 other *old* engravings, oblong folio and folio, 2.00. Early part of the century. 204
- Reynolds (Sir Joshua.) A Ghost, and the Mask.** Oblong folio, *colored; from the gallery of the Duke of Marlborough*, 1792. Also, BARTOLOZZI'S CONTEMPLATING PHILOSOPHER. Folio oval, 1788. 1.50. 205
- Harding (J. D.)** 10 LARGE and FINE *tinted drawings* on stone, of interesting scenes round Edinburgh, etc., *some margins cut close*, 1.00. 206
- Stothard**—4 oblong 4to *tinted* plates, L'Albus de la Credulite, L'Appel, La Timidite; L'Alarme; also 4 others, 4to, by GRACIANO ZANCON, The Ball, The Pincushion, etc., also, fine old colored print, "Les Presents du Jour de PAN." 1.50 the lot. Early part of the century. 207
- The Victory, The Escape, The Protection and The Affright—4 oblong oval plates after STOTHARD; Cybele *drawn in a chariot by lions*, and Juno *being drawn by peacocks*, by EDWARDS. Early part of the century. 1.00. 208
- Amor Rigettato, Cure Amorse, Prosperita and Fortuna**—4 *tinted* plates, oblong 4to; another nice set of 4, *illustrating matrimony*, etc., *no text, plain*, 1.00. End of the last and early part of this century. 209

Farm-yard
TINKER, a
KAUFFMAN

CU

Fawn, and
HAMILTON
etc.—set

cent Strat

English V
York Hou
the others

Set of 6 v
NESS, NA
one after
Early par

Nymphes
Acteon, t
and anot

Banditti
of Bandi

Female
1789, an

Europea
on India
2.25. E

Very Fi
India pa

French
Bathing

Tippo S
historical
1.25. I

La Cha
Early p

Allogr
La Pac

Early p

Allogr
dall A

One of
damaged.

Allogr
Scenes
and 4to

Head a
1.00.

Studios

Scott (
includ

margi

Roma
Roma

- mon and
rs; also,
century.
190
- ix female
Early
191
- Oranges,
penny,
192
- CECILIA,
Engraved
years old.
193
- dio, 2.00
194
- set of 12
195
- ings, folio,
196
- AER — 4
uniform in
197
- oval, large
198
- entry life in
199
- ary, 1.25
200
- LEY, royal,
201
- a Recolte
e century.
202
- gravings,
203
- masses, Oct.
part of the
204
- : from the
EMPLATING
205
- ing scenes
206
- Timidite;
shion, etc.,
ot. Early
207
- oblong oval
ing drawn
208
- tes, oblong,
o. End of
209
- Farm-yard (The.)** RUSTIC CONVERSATION, RURAL TRANQUILITY, and ITINERANT
TINKER, after WHEATLEY — a set of 4 oblong folio; also, the Four Seasons after
KAUFFMAN — set of 4 large oval folio. 1.50. 1786, etc. 210
- CUPID Binding Agala to a Laurel, Cupid and Euphrosine, Sylvia and her
Fawn, and The Shepherdess Urania — set of 4 very nice oblong folio plates after
HAMILTON and KAUFFMAN; also, Les Enfants qui downent a manger aux Poulets,
etc. — set of 4 oblong. 1.00. Early part of the century. 211
- Cecilia Fidel, The Power of Innocence, Cecilia Innamorata, and The Inno-
cent Stratagem — 4 large plates, oblong folio, 1.00. Early part of the century. 212
- English Views**, 8, including Portsmouth, Chatham, Sheerness, Westminster Hall,
York House, Charing Cross, and the Horse Guards; *the London views nicely colored*,
the others plain, oblong 4to, 1.25. 1788. 213
- Set of 6** very fine female figures illustrating SIMPLICITY, CHEERFULNESS, DRUNKEN-
NESS, NATURE, MILDNESS and INNOCENCE, four of which are from BARTOLOZZI,
one after ROMNEY and another after SIR JOSHUA REYNOLDS. Large folio, 2.00.
Early part of the century. 213
- Nymphes SORTANT du BAIN**, *fine folio old engraving*, after DIETRIEZ, Incaute
Acteon, tibi quod sine ueste Diana, FEMALE FIGURES, *very fine old folio engraving*;
and another fine large engraving, JOS. VERNET, 1751, *no margin*, 2.00. 214
- Banditti** at MARKE, SALVATOR ROSA, Pastoral, Tragedy, Comedy, Elegy, A Cap
of Banditti — a series of 5 folio, 1.00. Pub. by Mortimer, 1778. 215
- Female Heads and Figures (Studies of)**, etc. — a series of 5 4to, published by Orme,
1809, and other studies, various, a total of 14, *some very fine*, 1.25. 216
- European Scenery**, 27 fine views, oblong folio, including 3 of the Tyrol and others
on India paper, a fine old archway in the Coliseum at Rome, proofs before letters, etc.
2.25. Early part of the century. 217
- Very Fine STUDIES OF TREES (40)** by HARDING, and others, mostly folio, *some on*
India paper, 4.50. Early part of the century. 218
- French School**. Appollon fait danso les quatre saisons, 1779; another, A Lady
Bathing. 4 old and very fine and large engravings, one a little damaged. 2.50.
319
- Tippo Saib, Sultan of Mysore**, and LORD CORNWALLIS — a series of six oblong folio
historical plates, illustrating scenes in India in connection with that celebrated man,
1.25. End of the last century. 220
- La Chasse du LIEVRE** after MORLAND and IBBETSON — set of 4 folio, plain, 1.00.
Early part of the century. 221
- Allegorical Subjects**: Justitia, La Carita, L'Innocenza, La Chiesa, Mansuetudo,
La Pace — set of 6 very large folio, *full margins*, after RAPHAEL and Lazzarini, 3.00.
Early part of the century. 222
- Allegorical Subjects**: *La Nobil Arte della Seta*, Ladiffesa e la Coslanza Coronale
dall Avittoria, and 3 others, *large folio, broad margins*, 1.50. 223
- One of these very fine old plates "VERTU HEROIQUE," bearing the early date 1672 is slightly
damaged.
- Allegorical Subjects (4)**: An Etching by Ireland, Ovals of Faith and Hope, Two
Scenes from Shakespeare after SMIRKE, *a miscellaneous collection of about 40 folio*
and 4to, *all old*, 1.50. 224
- Head and Tail Pieces**. A curious collection of about 100, cut from ancient books,
1.00. 225
- Studies (about 30)**, *some tinted and fine*, 1.50. 226
- Scott (Sir W.)** 23 VERY LARGE folio Lithographic Engravings, illustrating his Works.
Including three portraits of SIR WALTER at different periods of his life, *fine large*
margins, 3.00. Milano, etc. About 1830. 227
- Roman History**. 8 LARGE and FINE copperplate engravings of scenes in Ancient
Roman History, oblong folio, 19x14, *not including the fine margins*, 3.25. 228

- Soltyskoff** (Prince Alex.) and E. B. EASTWICK, F.R.S., P.S.A. Indian Scenes and Characters, 16 large and fine tinted lithographs, from drawings made on the spot; with letterpress descriptions; large imperial folio. 2.25. Smith Elder, 1859. 229
- These fine views comprise, The Gardens of Amber near Jaypore, Fishers on the Coast of Coromandel, Festival of the Goddess Durga at Calcutta, Harem Carriage of the King of Delhi, Maharaja Hindu Rao Bahadur, Mountaineers of the Himalaya; Hunting — Leopards ready for the Chase, Cavalcade of Sikh Chieftains, The Palace of Jaypore, Fakirs, Negro and Arab in the Service of the Galkuar, The Gardens of Bombay, Dance of the Nauch Girls, etc., etc.
- Batty** (Cap.) EIGHT FINE ETCHINGS illustrating the PENINSULAR WAR, oblong folio, proof before letters, wide margins, 1.00. 1823. 230
- Roman Costumes.** EIGHTEEN beautiful colored plates drawn from nature, by PINELLI, C. HULMANDEL, oblong folio, 2.25. Pub. thirty-six shillings. Lon. 1820. 231
- Scripture Illustrations** by WILLIAM DARTON — A series of 29 nicely colored prints of Scripture subjects, oblong folio, cloth, 50c. 232
- Gibson** (J.) *The eminent Sculptor who studied under Canova at Rome.* DRAWINGS — 39 large and beautiful tinted plates of CLASSICAL and other subjects, engraved in exact imitation of the original drawings by G. WENZEL and L. PROSEDA. Large oblong folio, sewn, 1.50. Hogarth, 1852. 233
- Italian Portraits** (50) on stone, including Soldiers, Popes, Cardinals, and others. 1.25. Torine, 1838, etc. 234
- Edwards** (John.) "British Herbal," 21 parts of this fine work, containing plates 1 to 84 of the FLOWERS and MEDICINAL PLANTS of Great Britain and Ireland, beautifully colored, large folio, and as clean as when issued by Dodsley & Boydell in 1770, 2.75. 235
- Panoramic** (A folding) View of the City of Funchall, Madeira, oblong folio, mounted 236
- 25c. 1844.
- King** (Thos. H.) Modeles de Calices du XI. au XIV. Siecle mesures et dessines sur les Originaux, a la Grandeur de l'Execution: 11 plates illustrating many fine old Fonts, etc., of the Middle Ages, 4to, 75c. Bruges, 1858. 237
- Christiania**, capital of Norway — 12 oblong lithographic plates, 4to, with letterpress in Swedish, Norwegian and English, 30c. 238
- Adventures** (The) of a GENTLEMAN in SEARCH of a HORSE by Caveat Emptor, Gent, one, etc., the well known Geo. Cruikshank, 46 illustrations mounted on 18 large and thick sheets of cartridge paper, 1.50. Longmans, 1835. 239
- L'Antica Etruria Marittima**, compresa nella dizione Pontificia descritta ed ILLUSTRATA con i MONUMENTI — 55 large folio plates from this great work illustrative of the Monuments, Tombs, Antiquities, Buildings, Temples, etc., of the ANCIENT ETRUSCANS, 3.00. Roma, 1851. 240
- Wilkie Gallery** (The.) A selection of 46 beautiful engravings of the best paintings of SIR DAVID WILKIE, R.A., including his Spanish and Oriental sketches, with notices, biographical and critical, fine portrait and view of his birthplace. Royal 4to, cloth gilt, gilt edges, 5.25 (pub. £3 3s.) Lon., Virtue. 241
- Musee des Antiques grave par BOUILLON.** Upwards of 250 large and very fine engravings of Statues, Busts, Bas-reliefs, etc., in 3 vols, imperial folio, half red morocco, top edges gilt. The text is missing, but each plate bears its own inscription. In fine clean condition, 22.00. 242
- Architectural ORNAMENT** of ALL NATIONS — exemplified in a series of original designs, displaying the characteristic features of every class of decorative enrichment. Illustrated with 48 elaborate and highly finished architectural designs. Imperial folio, half cloth, 2.00 (pub. at £3 13s. 6d.) Lon. n.d. 243
- Album Cosmopolite** ou choix des collections de M. ALEXANDRE VATTEMARE, compose de sujets historiques, paysages, marines, interieurs, costumes, et scenes de moeurs, fleurs medailles, portraits, manuscrits, vitraux, etc., tous originaux dessines par les principaux artistes de l'Europe, accompagne de textes et facsimile d'autographs de souverains, princes, princesses, ministres, savants, poetes, artistes, etc. 19 parts, should be 20. Containing nearly 100 large and fine lithographs, clean as when issued in portfolio, 6.50. Paris, 1839. 244

Konigl B.
 engravings
 including
 La Ste. Fam.
 La Romaine
 Gimon et Per
 Portique d'un
 La Defaillan
 La Ste. Mari
 75c. 250
 La Saignee,
 Jesus Christ
 Ste. Agnes M
 Un Combat
 Une Napolit
 Un Invalide
 L'Eglise des
 257
 La Guisnier
 La Sainte V
 Germinia et
 Une Romain
 La Toilette,
 Intercession
 La Vanite,
 Le Chanteu
 Le Chaudro
 Le Billet-d
 Abraham et
 L'Innocenc
 Scene Conj
 Les Affaires
 Le Boulang
 Une Quere
 273
 Le Peintre
 Une Napol
 Le Mise au
 276
 Le Midi, 7
 Le Dejeun
 Le St. Cor
 Le Prison
 Les Coos,
 The abo
 tints, and
 engravings.
 Dell (J.)
 on wood
 engravi
 4.50. V
 Leuchte
 great M
 picture
 edges,
 The Lo
 executed b
 of treatme

GRAND GERMAN GALLERY.

Konigl BAYER PINAKOTHEK ZU MÜNCHEN, comprising beautiful lithographic engravings after old Masters, mostly in tints on India paper, size 34x24, including margins. Piloty-Munchen, 1817-31. Sold separately as follows:

- La Ste. Famille, 75. 245
 La Romaine en Pariere, 75c. 246
 Gimon et Pera, 75c. 247
 Portique d'une Chartreuse, 75c. 248
 La Defaillance. 249
 La Ste. Marie avec l'Enfant Jesus Christ, 75c. 250
 La Saignee, 75c. 251
 Jesus Christ en Age Pueril, 75c. 252
 Ste. Agnes Martyre, 75c. 253
 Un Combat des Coos, 75c. 254
 Une Napolitaine d'Alvito, 75c. 255
 Un Invalide avec son Petit Fils, 75c. 256
 L'Eglise des Franciscains a Salzbourg, 75c. 257
 La Guisniere, 75c. 258
 La Sainte Vierge, 75c. 259
 Germinia et Italia, 75c. 260
 Une Romaine d'Albano, 75c. 261
 La Toilette, 75c. 262
 Intercession d'une Sœur, 75c. 263
 La Vanite, 75c. 264
 Le Chanteur, 75c. 265
 Le Chaudronnier et sa Femme, 75c. 266
 Le Billet-doux, 75c. 267
 Abraham et Hagar, 75c. 268
 L'Innocence, 75c. 269
 Scene Conjugale a Munich, 75c. 270
 Les Affaires de la Jeunesse, 75c. 271
 Le Boulanger Prevoyant, 75c. 272
 Une Querelle de Paysans Hollandais, 75c. 273
 Le Peintre, 75c. 274
 Une Napolitaine, 75c. 275
 La Mise au Tombeau de Jesus Christ, 75c. 276
 Le Midi, 75c. 277
 Le Dejeuner, 75c. 278
 Le St. Corps, 75c. 279
 Le Prisonnier de Guerre, 75c. 280
 Les Coos, 75c. 281
- The above splendid plates are engraved in the very finest style of lithography, heightened by tints, and so admirably done as to be scarcely distinguishable from the most perfect line engravings.
- Dell (J. H.) NATURE PICTURES** — a series of 30 ORIGINAL ILLUSTRATIONS, drawn on wood by J. H. DELL, and engraved by R. PATERSON, in the finest style of wood engraving, on fine thick paper with large margins. Royal folio, cloth, gilt, gilt edges, 4.50. — Warne & Co., 1871. 312
- Leuchtenberg Gallery of PICTURES at MUNICH.** 262 splendid etchings after the great Masters, ancient and modern, with lists of the painters, and descriptions of each picture in English, by J. D. PASSAVANT. Thick royal 4to, half morocco gilt, gilt edges, a fine copy, 4.75. — Frankfort, 1851. 313
- The Leuchtenberg Gallery is one of the finest in existence. The etchings in the above work are executed by Herr Muzel, the Curator of the Gallery, and exhibit with fidelity the peculiar method of treatment of each painter. 314
- Chevaux Anglais, pur sang, 75c. 282
 Mort de la Sainte Vierge, 75c. 283
 L'Emouleur, 75c. 284
 Euirie en Ville, 75c. 285
 Le Chute de Liris pres d'Isolia di Sora, 75c. 286
 L'Orage, 75c. 287
 Chiens de Chasse aux Prises, 75c. 288
 Le Soldat en Quartier, 75c. 289
 La Sainte Vierge Aaparoit a Saint Bernard, 75c. 290
 Boutique de Barbier en Hollande, 75c. 291
 La Lionne, 75c. 292
 Le Jour de Rois, 75c. 293
 Bethsabe au Bain, 75c. 294
 Le Retour d'Ayeul du Marche de Fruits, 75c. 295
 La Sainte Madeleine, 75c. 296
 L'Enfant Jesus au Sein de sa Mere, 75c. 297
 Jupiter et Antiope, 75c. 298
 Estaminet Hollandais, 75c. 299
 Le Berger et la Bergere, 75c. 300
 La Guirlande de Fruits, 75c. 301
 Les Lionceaux (The margin of this plate is water-stained), 75c. 302
 Portique d'une Chartreuse, 75c. 303
 Chriemhilde, Hagen et Volker, 75c. 304
 La Reconciliation des Sabins avec les Romains, 1.25. 305
 La Chasse aux Lions, 1.25. 306
 La Defaite de Sennacherib, 1.25. 307
 Amor und Psyche, 2.00. 308
 Tancrede dans la Foret Enchantee, 2.50. 309
 Venus und Amor, 3.00. 310
 La Madelaine Repentante, 2.50. 311

Carter's Specimens of ANCIENT SCULPTURE and PAINTING, from the Earliest Period to the Reign of Henry VIII., now remaining in England, consisting of Statues, Baso-relievs, Sculptures, etc.; Brasses, Monumental Effigies, Paintings on Glass and on Walls, Missal Ornaments, Carvings on Cups, Crosiers, Chests, Seals, Ancient Furniture, etc., etc., designed to show the Rise and Progress of Sculpture and Painting in England, to explain Obscure and Doubtful parts of History, and to preserve the portraits of great and eminent personages, with historical and critical illustrations by the following distinguished Antiquaries: Francis Douce, Richard Gough, William Bray, John Fenn, J. S. Hawkins, and Rev. J. Milner, of Winchester, reprint of the enlarged edition, arranged in topographical order, with additional notes by Sir Samuel Rush Meyrick, Dawson Turner, John Britton, F.S.A., and others, including also the MS. notes contained in copies left by the late Richard Gough and Francis Douce, and now preserved in the Bodleian Library, and a general index with 100 large engravings, many of which are beautifully colored, and several highly illuminated with gold, carefully reproduced from the original plates, in 1 handsome volume, royal folio, bound in half crimson morocco, top edges gilt, 15.00 (first pub. \$15 15s.), 1887.

314

"The present edition has very considerable advantages. It is better arranged and more correct than the first — has large additions and illustrations, in the form of notes, contributed by competent scholars, and is accompanied by a complete index, the want of which has always been felt. The plates are in good condition, and many of them beautifully colored. The Missal Plate, which is splendidly illuminated in gold, carmine and ultra-marine, the Lynn Cup, the Crozier of William of Wykeham, and the Paintings on Glass, have a most brilliant effect, and render the volume perfectly irresistible to the lover of antiquarian lore."

Strutt (J. C.) SYLVIA BRITANNICA et SCOTICA, portraits of forest trees distinguished for their antiquity, magnitude, or beauty, drawn from nature; 50 beautiful and highly finished etchings, brilliant impressions, imperial folio, half red morocco, extra, 14.00 (pub. at £9 9s.), 1826.

Marlborough Gems, Engraved by BARTOLOZZI, Gemmarum, Antiquarum Delectus et Præstantioribus Desumptus quæ in Dactylotheclis Malburiensis Conservantur. 108 full-page engravings, chiefly by BARTOLOZZI, illustrating one of the finest collections of gems ever formed. 2 large vols, folio, richly bound in half crimson morocco, gilt top, 12.00, original cost would be £10. Privately printed, J. Murray, 1845. 316

"This collection of gems, made by GEORGE SPENCER, third Duke of Marlborough, was formed principally of the cabinet of LADY BETTY GERMAINE, valued at £7,000. The Cupid and Psyche alone, the finest antique intaglio extant, was bought by the Duke for £5,000. The letterpress, which is in French and Latin on parallel pages, was written by JACOB BRYANT, DR. MATTY, DR. WILLIAM COLES and LOUIS DUTENS."

Imperial Gallery (The) of BRITISH ART, illustrated by 48 examples of eminent artists engraved on steel, after the line manner, imperial folio, half-red morocco, top edges gilt, 22.00. Cassel & Company, Lon. 317

This is perhaps the most beautiful book issued by this celebrated firm. The masterpieces of J. W. M. TURNER, SIR JOSHUA REYNOLDS, T. GAINSBOROUGH, SIR C. L. EASTLAKE, E. LANDSEER, A. COOPER, SIR DAVID WILKIE, DAVID ROBERTS, and other eminent English painters, are in this volume exhibited in the finest possible state of excellence.

HORTENSIVS, CICERO and ATTICUS were collectors of gems. "You imagine," says Cicero to his friend, who had purchased him some rarities at a cheap rate, "how my passion increases for this sort of thing! Your discovery is admirable, and the statue seems to be made purposely for my cabinet." Thank heaven, the spirit which animated the great Roman orator has not quite disappeared from among us; considering the elevating and ennobling pursuit of collecting and having in one's own possession, even modern representations of ancient art. We take this new departure in the history of print-selling, and offer for the first time in classified and convenient lots, at a cheap rate, this fine collection of Prints and Engravings, almost exactly as they were purchased for us in London. We trust the small profit system here put into practice, will be appreciated; and we earnestly solicit the opinions of our correspondents in this matter for our future guidance. We shall do our best to dispatch all orders with care by express, post or otherwise, according to directions, and trust they will be delivered in the same admirable condition in which they leave this establishment.

Earliest
of Statues,
Glass and
Ancient
and Paint-
preserve
ustrations
, William
int of the
ir Samuel
g also the
is Douce,
120 large
luminand
ume, royal
5a.), 1887.

314
more correct
competent
felt. The
te, which is
of William
the volume

tinguished
and highly
extra, 14.00

315
n Delectus
servantur.
finest collec-
n morocco,
845. 316

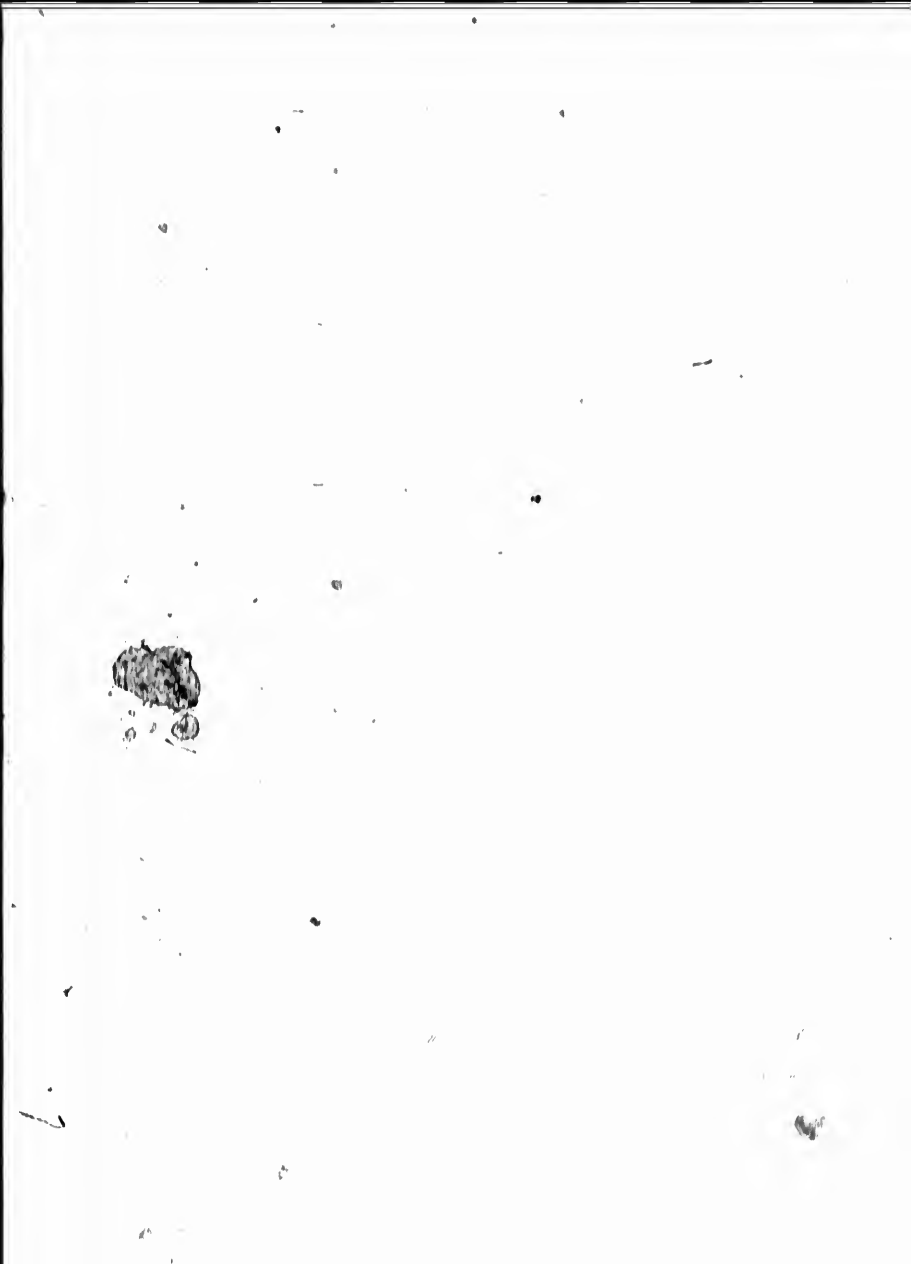
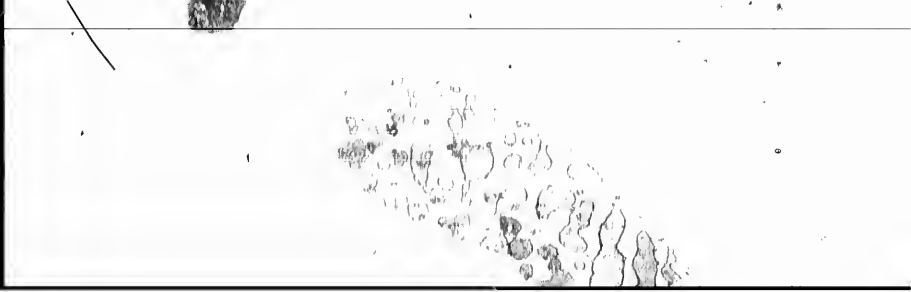
was formed
and Psyche
letterpress,
DR. MATTY,

of eminent
morocco, top

317
masterpieces of
ASTLAKE, E.
nent English

gine," says
rate, "how
ble, and the
spirit which
g us, consid-
a one's own
w departure
d convenient
t exactly as
em here put
of our corre-
t to dispatch
ns, and trust
y leave this





7



